

Star Public School

Dear Parents'

Today's assignment

Computer - Chapter 4

G.K - Chapter 14 and 16

Art and craft

Home assignment

Computer- Learn chapter 4 question answer

G.K - Learn chapter 14 and 16

4

Working of a Computer

Learning Outcomes

Students will be able to

- understand how the IPO cycle works.
- learn about the working of a computer.
- identify and understand the working of computer devices.



Sanaya: Why do we eat food?



Vivaan: We eat food to obtain energy. It helps us to remain active and do various activities.



Sanaya: Vivaan, it is interesting to note that the computer also needs electricity in place of food to perform different tasks. Let's together learn about how a computer works.

Children before understanding the working of a computer, help Sanaya and Vivaan to answer the following questions.

1. Is computer a smart machine? Yes No
2. What does it need to work? Food Instructions
3. Computers are different from us in many ways but they also share some similarities. List the similarities between computer and humans.

Input-Process-Output (IPO) Cycle

A system that consists of input, output and the steps required to change the input into output is called **Input-Process-Output (IPO) cycle**. Computer is a machine that works on the principle of IPO cycle.

The IPO cycle has the following components.

IPO Cycle

Input (I)

- Any information, idea or resource given to a computer is called input.
- Input is given using devices like mouse and keyboard.

Process (P)

- Action(s) performed to change input into output is called a process.
- Processing means working on data. It is done by CPU.

Output (O)

- The final result that we get after processing is called output.
- We get output from the devices like monitor and printer.

Let's understand the IPO cycle with real-life example.



We take a blunt pencil which is input.



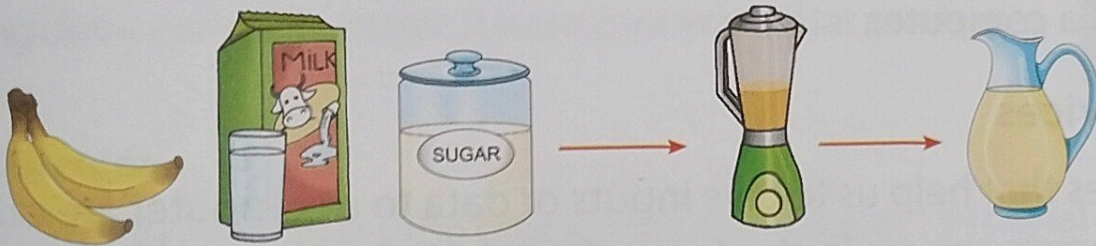
We sharpen a pencil using a sharpener. The sharpener acts as a processing device.



We get a sharpened pencil which is the output.

Analyse and Answer

Carefully observe the given process and write the correct answers in the given passage.



Banana, Milk and Sugar are the inputs. When we blend them in a mixer, it is considered as the process. The shake that we get is the output.

Quick Recap

- A computer has many devices such as input, processing, output and storage.
- Input devices help us to give inputs to a computer.
- CPU is the processing device of a computer.
- The parts of a computer that help us to give output are called output devices.
- A storage device stores data for later use.



TRAIN THE MIND

QUICK CHECK

Skills Covered: Observation, Critical and logical thinking, Analytical thinking, Memorisation, Identification

A. Correct Answer: Tick (✓) the correct option.

1. Which of the following devices prints information on a paper?
 Printer Monitor Mouse
2. Which of the following is the processing device of a computer?
 Speaker Mouse CPU
3. Which of the following devices helps to give inputs to a computer?
 Processing Output Input
4. Which of the following devices helps to store information?
 Mouse Pen drive Keyboard

B. Find and Write: Write I for input, O for output and P for processing in the following.

1. Making drawing



I



P



O

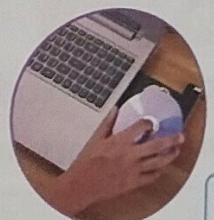
2. Listening to songs



O



I

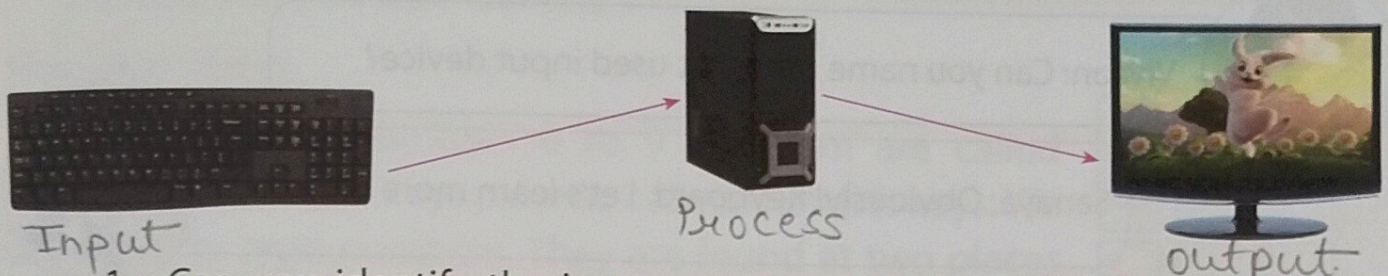


P

C. Think and Match: Match the data given in different columns. One has been done for you.

Input	Process	Output
1. 6 2 4 8	Arrange in increasing order.	8
2. 3 + 5	Arrange in decreasing order.	2 4 6 8
3. CPMOUETR	Calculate.	PINK
4. RED + WHITE	Unscramble.	52 26 21 13 5
5. 26 13 21 52 5	Mix.	COMPUTER

D. Observe and Write: Observe the given image carefully and answer the questions that follow.



- Can you identify the input, process and output devices in the given image?
- Does the computer follow the IPO cycle? Yes No

THINK AND WRITE

Skills Covered: Critical and logical thinking, Applicative thinking, Memorisation

Answer the following questions.

- Name the devices a computer has.
- Name the processing device of a computer.
- State the use of speakers.

[HOTS]

APPLY YOUR LEARNING

A computer consists of many devices. Priya's teacher asked her to make a web chart showing different devices. Help her to draw the web chart.

Skills Covered: Observation, Memorisation, Analytical thinking, Critical thinking, Brainstorming

[Integrated Learning]

LINK AND LEARN

Open Paint. Draw an IPO cycle related to everyday life and colour it. Save your work. [Art]

Skills Covered: Applicative thinking, Critical and logical thinking, Observation

22/9/24



DATE _____

PAGE _____

Computer

Chapter = 4

Q1. Name the devices a computer has.

Ans. Input device ✓

• Processing device ✓

• Output device

• Storage device ✓

Q2. Name the processing device of computer.



Ans C.P.U. is the processing device of computer.

Q3. State the use of speaker?

Ans Speaker help us to hear music or any other sound.

Noticed
23/8/24.



REVISION EXERCISE 3

A. Match the flags with their countries.

Column A

1.



2.



3.



4.



5.



Column B

a. Bangladesh

b. China

c. Bhutan

d. India

e. Sri Lanka

B. Match the following.

Column A

1. Mexico

2. Norway

3. Japan

4. Holland

5. Scotland

Column B

a. Dutch

b. Japanese

c. Mexican

d. Scot

e. Norwegian

C. Fill in the blanks.

1. The Table Mountain is located in South Africa.

2. The Sydney Opera House is located in Australia.

3. Angkor Wat is located in Cambodia.

4. Machu Picchu is located in Peru.

5. The Eiffel Tower is located in Paris.

16

Notable Names

Identify these well-known personalities from India. Write their names below their pictures. Take help from the given clues.



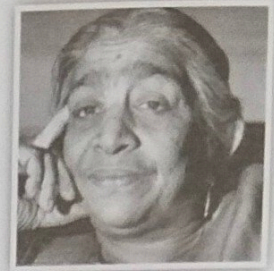
1. First musician to receive the Bharat Ratna

M.S. Subbulakshmi



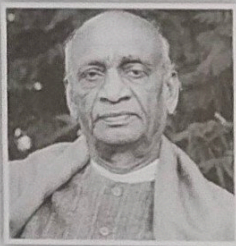
2. First Asian scientist to win a Nobel Prize

C.V. Raman



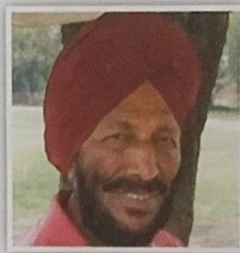
3. Nightingale of India

Sarojini Naidu



4. Iron Man of India

Sardar Vallabhbhai Patel



5. Flying Sikh

Milkha Singh



6. Melody Queen of India

Lata Mangeshkar



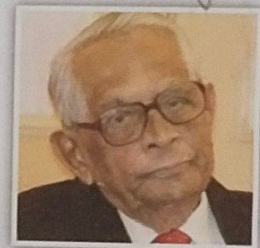
7. Father of Indian Constitution

B.R. Ambedkar



8. First Indian woman to climb Mount Everest

Bachendri Pal



9. Creator of

Malgudi Days

R.K. Narayan



Clues for you

Milkha Singh R.K. Narayan B.R. Ambedkar Sarojini Naidu M.S. Subbulakshmi
Bachendri Pal Lata Mangeshkar C.V. Raman Sardar Vallabhbhai Patel

3/8/24

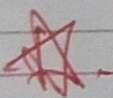


DATE _____

PAGE 1/21

Chapter - 14

1. Muslims pray in mosque.
2. Buddhist pray in pagoda.
3. Hindus pray in temple.
4. Jews pray in synagogue.
5. Sikhs pray in Gurdwara.
6. Christians pray in church.
7. Parsis pray in Fire temple.



Kirti/29
23/8/24