

STAR PLAY SCHOOL

Dear Parents,
Today's assignment

👉 basant panchami function

👉 orals done in maths (number names and table of 2&5)

Home Assignment

👉 Do pge no 52 and 54 of maths primer

👉 learn the number names given below

10- Ten

20- Twenty

30- Thirty

40- Forty

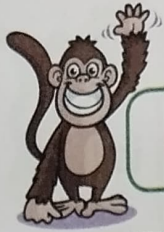
50- Fifty

60- Sixty

70- seventy

80- Eighty

90- ninety



Count, Circle and Subtract



$$\boxed{5} - \boxed{2} = \boxed{3}$$



$$\boxed{9} - \boxed{4} = \boxed{}$$



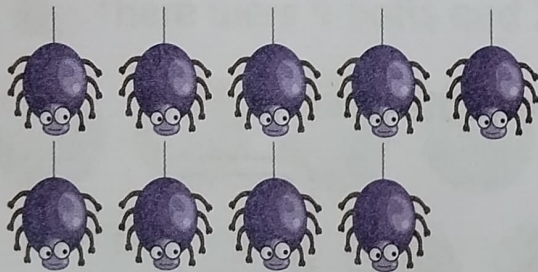
$$\boxed{6} - \boxed{1} = \boxed{}$$



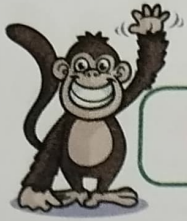
$$\boxed{7} - \boxed{3} = \boxed{}$$



$$\boxed{10} - \boxed{8} = \boxed{}$$



$$\boxed{9} - \boxed{3} = \boxed{}$$



Count, Cross and Subtract



$$\boxed{9} - \boxed{6} = \boxed{3}$$



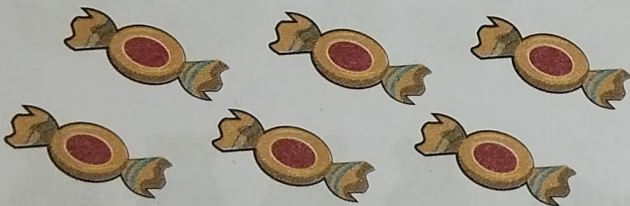
$$\boxed{5} - \boxed{3} = \boxed{}$$



$$\boxed{7} - \boxed{2} = \boxed{}$$



$$\boxed{3} - \boxed{2} = \boxed{}$$



$$\boxed{6} - \boxed{4} = \boxed{}$$



$$\boxed{8} - \boxed{3} = \boxed{}$$